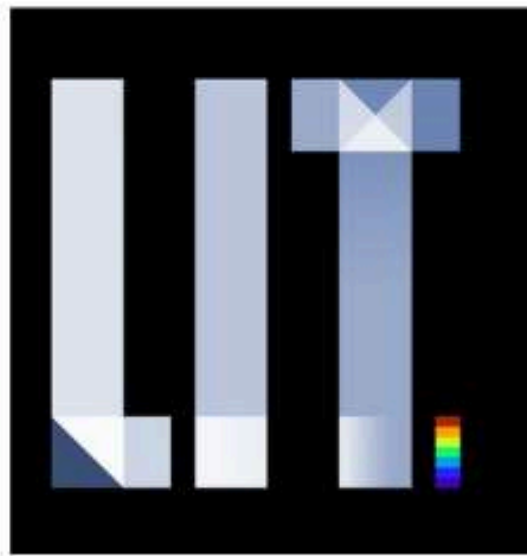


PAO BC OAKA PROJECT VIP

Project's Awards



2025
WINNER
LIGHTING
DESIGN
AWARDS





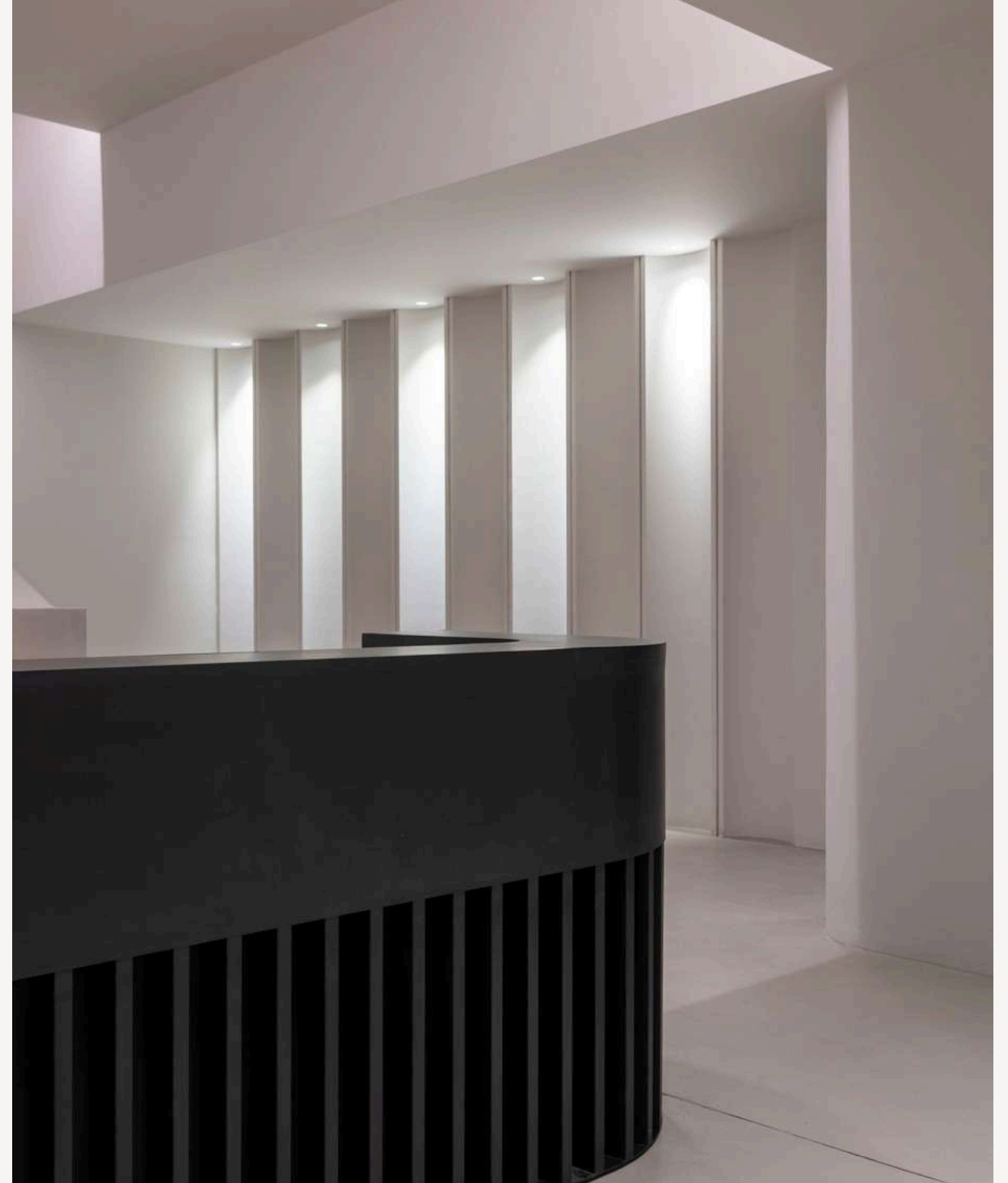
PAO BC OAKA PROJECT
VIP ENTRANCE & VIP LOUNGE



Introduction

Riche proudly designed and executed the lighting and spatial aesthetics for the Entrance and VIP Lounge of PAO BC at OAKA, crafting an environment that embodies sophistication, luxury, and functionality. This project seamlessly merges high-end design with advanced lighting techniques, elevating the visitor experience to new heights.

Riche Beyond Darkness



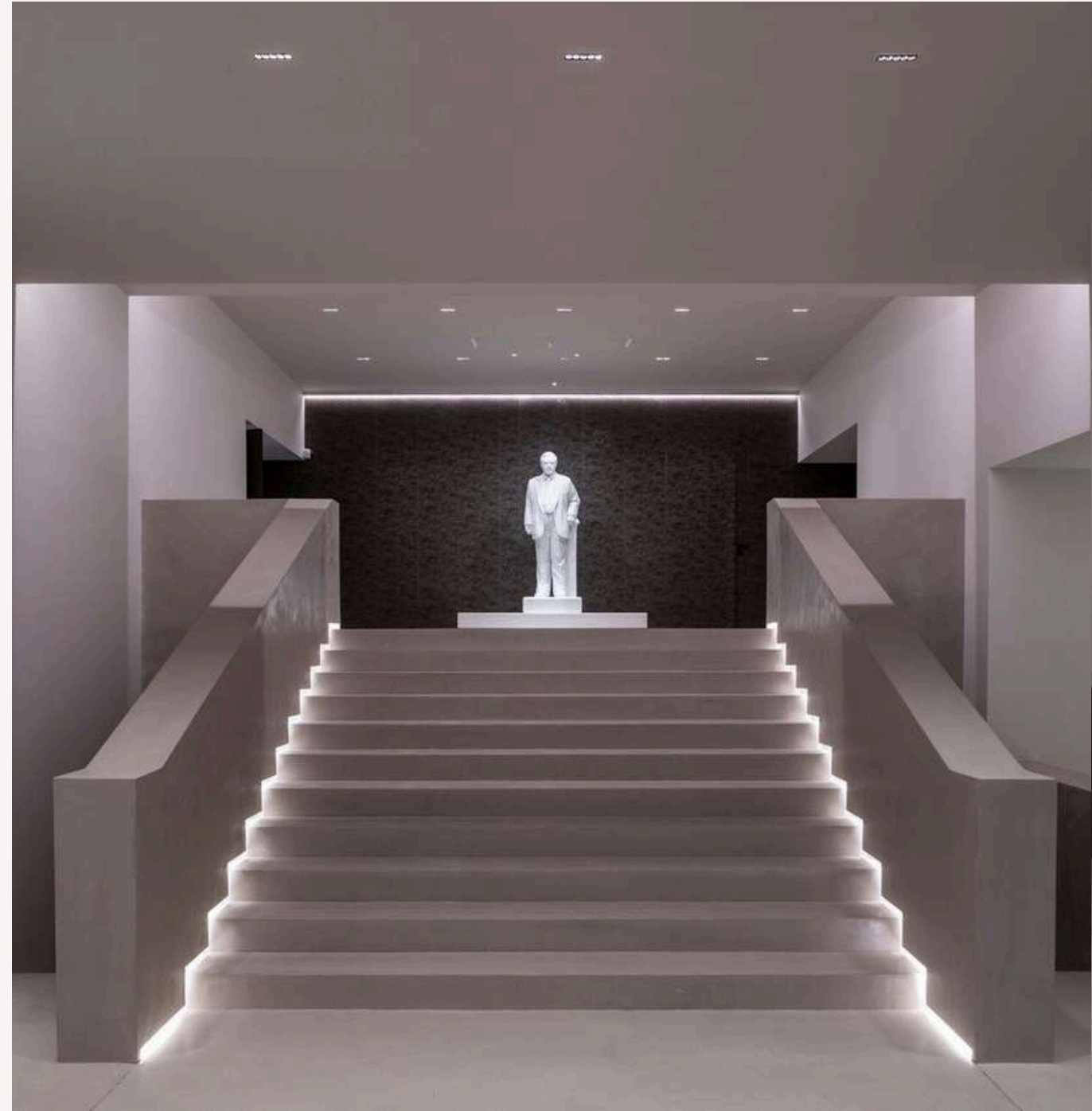


RICHE'S ROLE & EXPERTISE

With a deep understanding of premium hospitality and sports venue aesthetics, Riche took on the challenge of redefining these spaces. By integrating both design and lighting solutions, the goal was to create a setting that is not only visually stunning but also functional. Every element was carefully curated to enhance the atmosphere, ensuring a balance between grandeur and comfort.

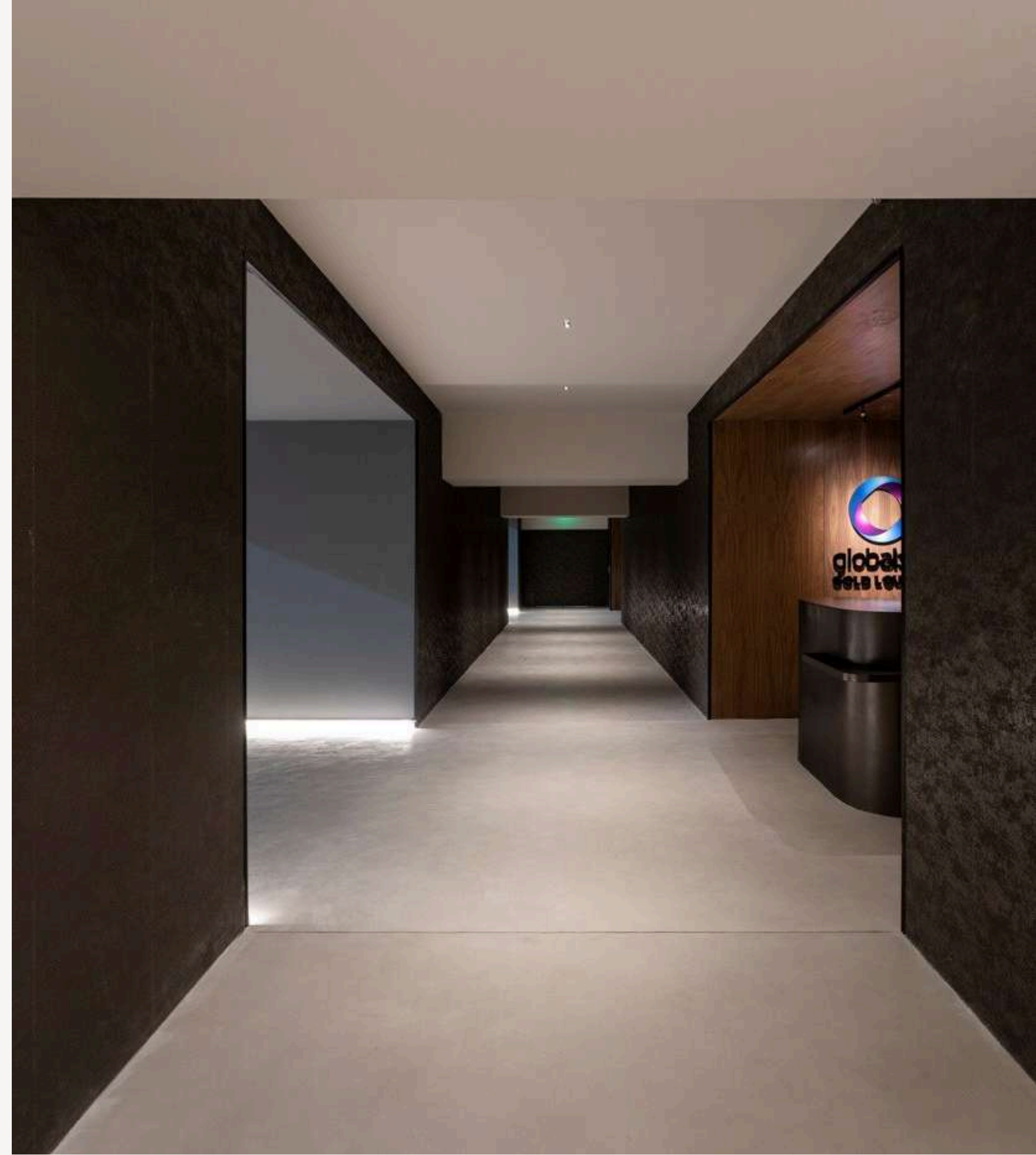






DESIGN CONCEPT & AESTHETIC APPROACH

The design philosophy is a harmonious blend of modern minimalism and timeless elegance. Earthy tones and deep contrasts were selected to evoke a luxurious yet welcoming ambiance. Geometric precision and flowing forms bring a sense of balance, while the overall spatial composition ensures an intuitive and immersive experience for visitors. The layout allows for an effortless transition between intimate seating areas and open social spaces, maintaining a sense of exclusivity.





LIGHTING DESIGN STRATEGY



Lighting played a pivotal role in defining the character of the Entrance and VIP Lounge. A carefully orchestrated balance of indirect and directional lighting highlights architectural details while setting a refined and atmospheric mood. The strategic placement of warm and soft lighting enhances depth, while advanced LED technology ensures both energy efficiency and visual comfort. Every illuminated surface was meticulously planned to accentuate textures, create contrast, and reinforce the elegance of the space.



MATERIAL SELECTION & HIGH-END FINISHES

Luxury is woven into the very fabric of this project through the meticulous selection of premium materials. Marble, wood, and velvet were chosen to add texture and depth, creating an environment that feels both rich and inviting. Metallic accents provide an additional layer of sophistication, subtly catching the light and enhancing the overall aesthetic. The interplay of refined surfaces and tactile finishes contributes to an experience that is as visually stunning as it is sensorially engaging.

RICHE BEYOND DARKNESS

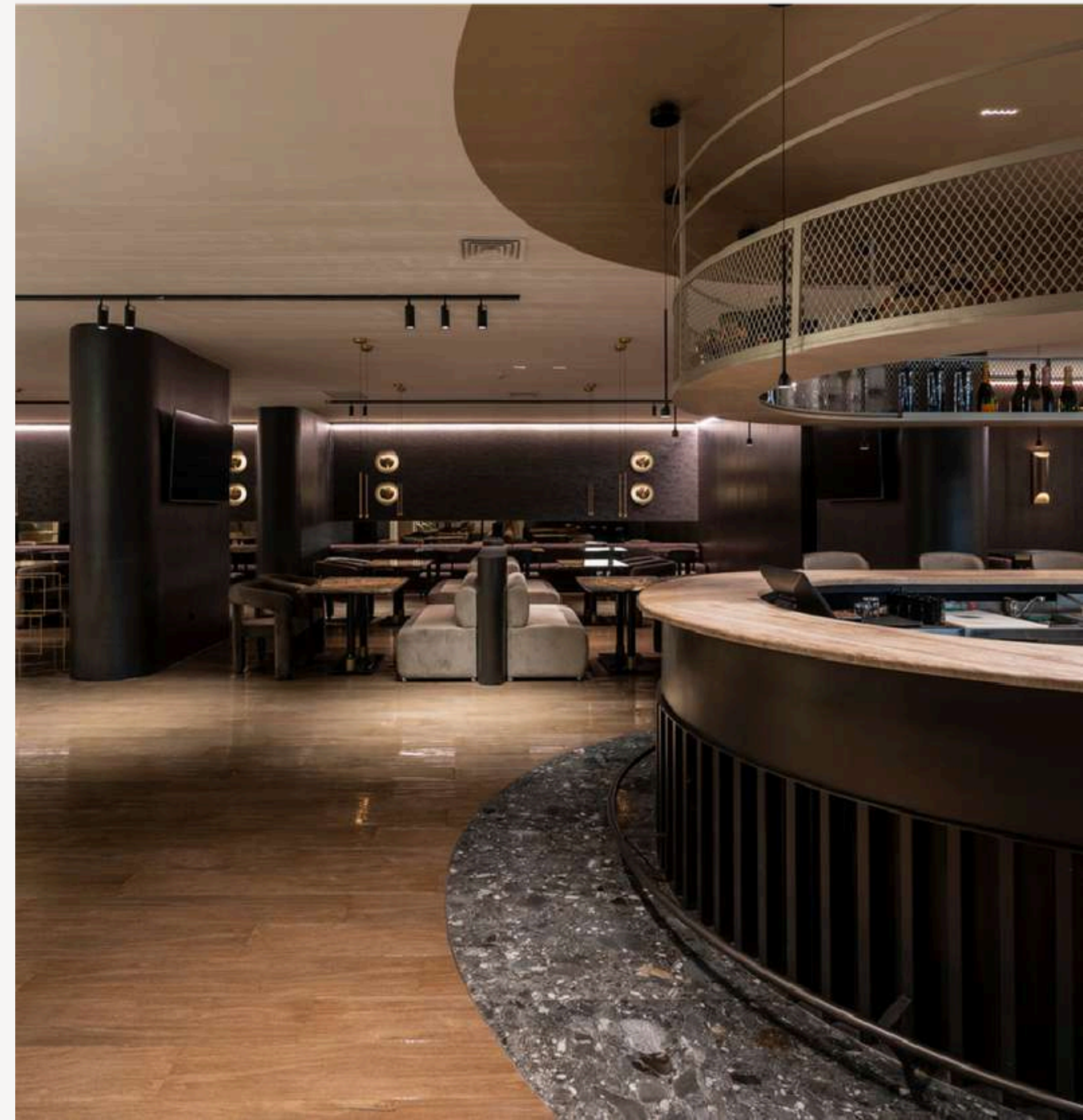
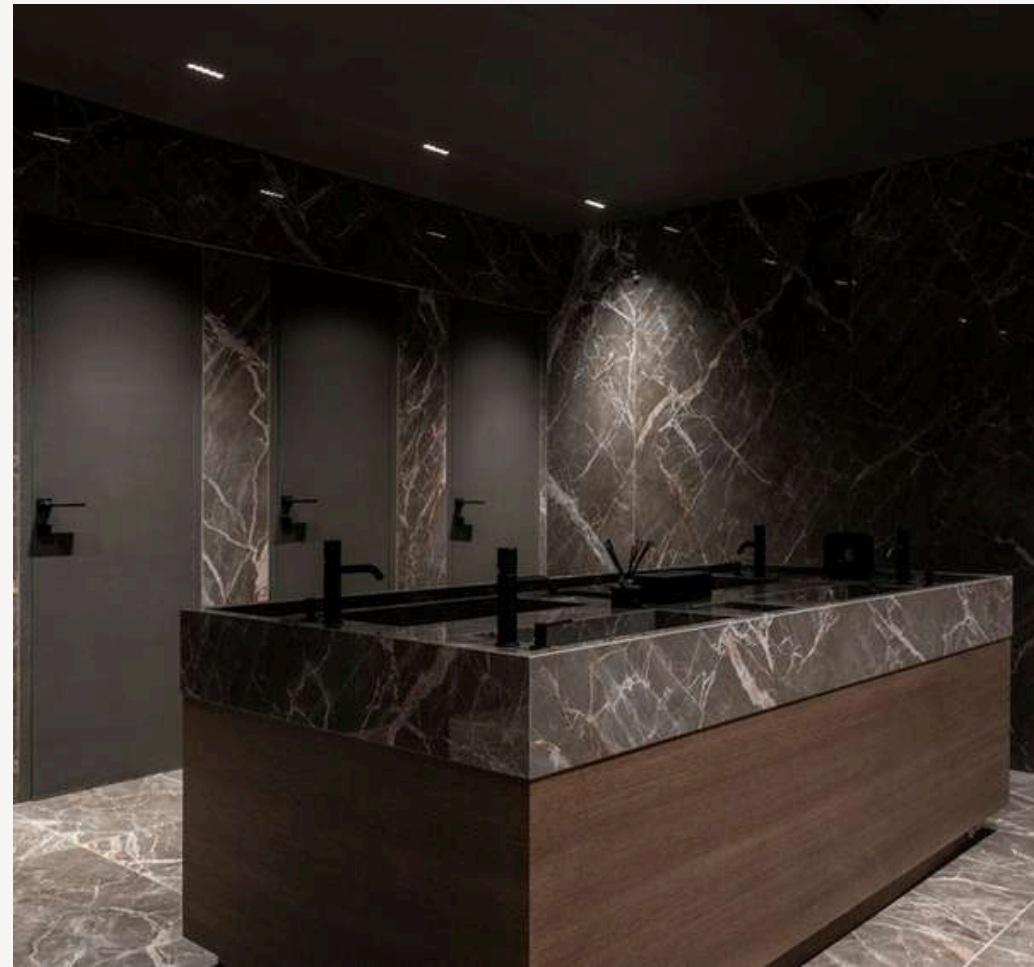
PAO BC PROJECT





RICHE BEYOND DARKNESS

PAO BC PROJECT



SPATIAL FLOW & FUNCTIONALITY

Every design choice was made with the movement and comfort of visitors in mind. The space is thoughtfully divided into zones that promote both privacy and social interaction. Ergonomic seating ensures maximum comfort, while the architectural elements guide the eye naturally through the environment. From the entrance to the lounge, every transition feels effortless, reinforcing a seamless and immersive journey.





RICHE BEYOND DARKNESS

PAO BC PROJECT

TECHNOLOGY & INNOVATION IN DESIGN

Beyond aesthetics, this project integrates cutting-edge technology to enhance both ambiance and functionality. Smart lighting controls allow for dynamic adjustments, creating adaptable atmospheres for different events and occasions. Acoustic treatments were strategically implemented to optimize sound quality, ensuring an immersive yet comfortable experience. The combination of innovative materials, automated systems, and precision-engineered lighting elevates the space to a new level of sophistication, making it a benchmark for modern VIP hospitality.

RICHE BEYOND DARKNESS

PAO BC PROJECT





FINAL IMPACT & VISITOR EXPERIENCE

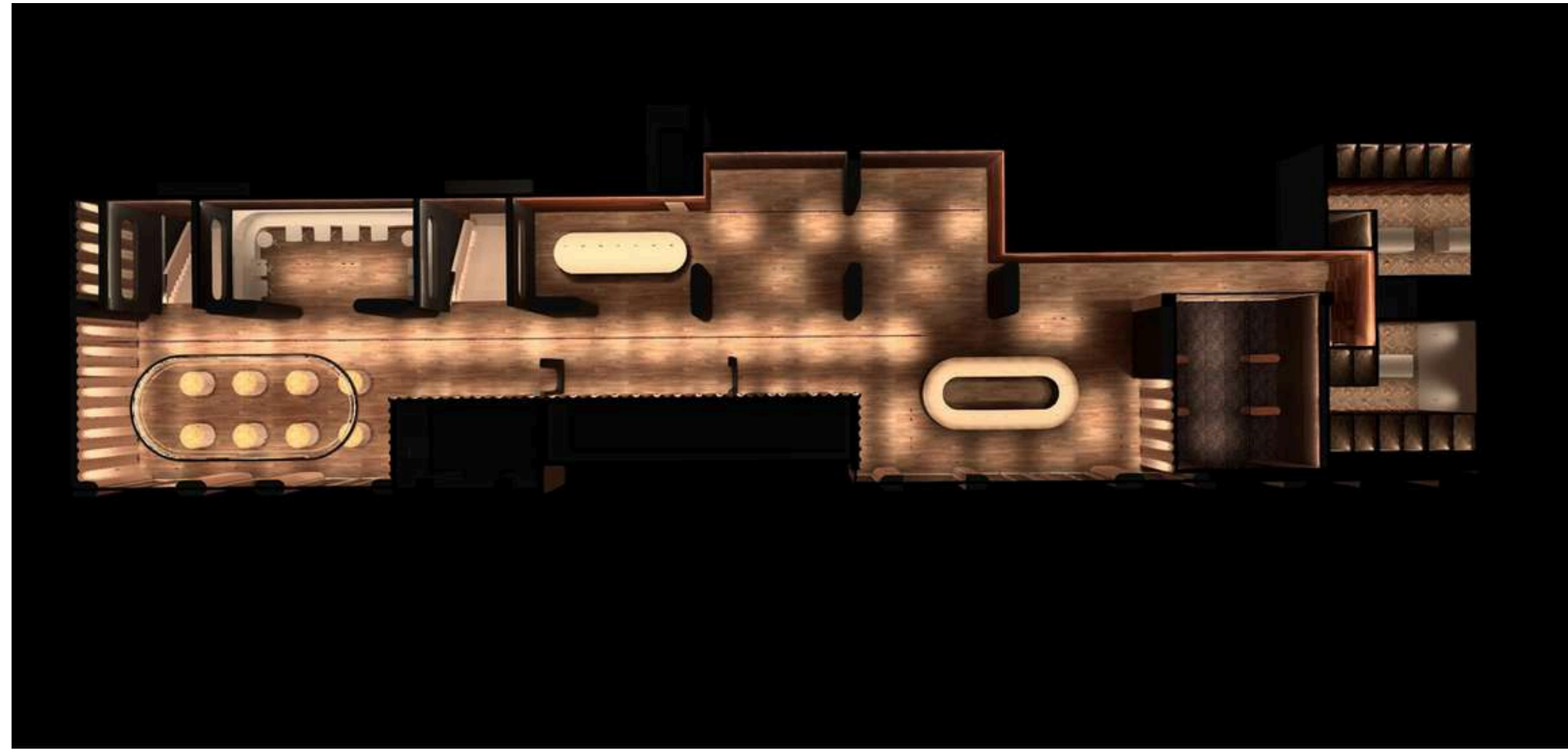
The completion of this project marks a new standard for VIP hospitality within sports venues. The Entrance sets the stage with an immediate sense of grandeur, while the Lounge offers an exclusive retreat that embodies prestige and excellence. The combination of refined design, strategic lighting, and impeccable material choices elevates the identity of PAO BC, making this space a true benchmark for luxury and comfort.

LIGHTING CALCULATIONS & RENDERS

To ensure an optimal balance between aesthetics, functionality, and energy efficiency, extensive lighting calculations were performed. Every fixture was strategically positioned based on photometric analysis to achieve the perfect illumination levels while minimizing glare. High-fidelity 3D renders provided an accurate visualization of the final outcome, allowing for fine-tuning of details before execution. This data-driven approach guaranteed that the lighting not only complemented the design but also met technical performance standards, enhancing the overall user experience.

RICHE BEYOND DARKNESS

PAO BC PROJECT





LET'S CREATE
TOGETHER.

Interior Design: Markos Vouzounerakis
Lighting Design: RICHE
Construction: Varagons
Photographer: Spyros Hound photography
Client: WHITE VEIL
Project: PAO BC
Space: 1500 Sqm2

